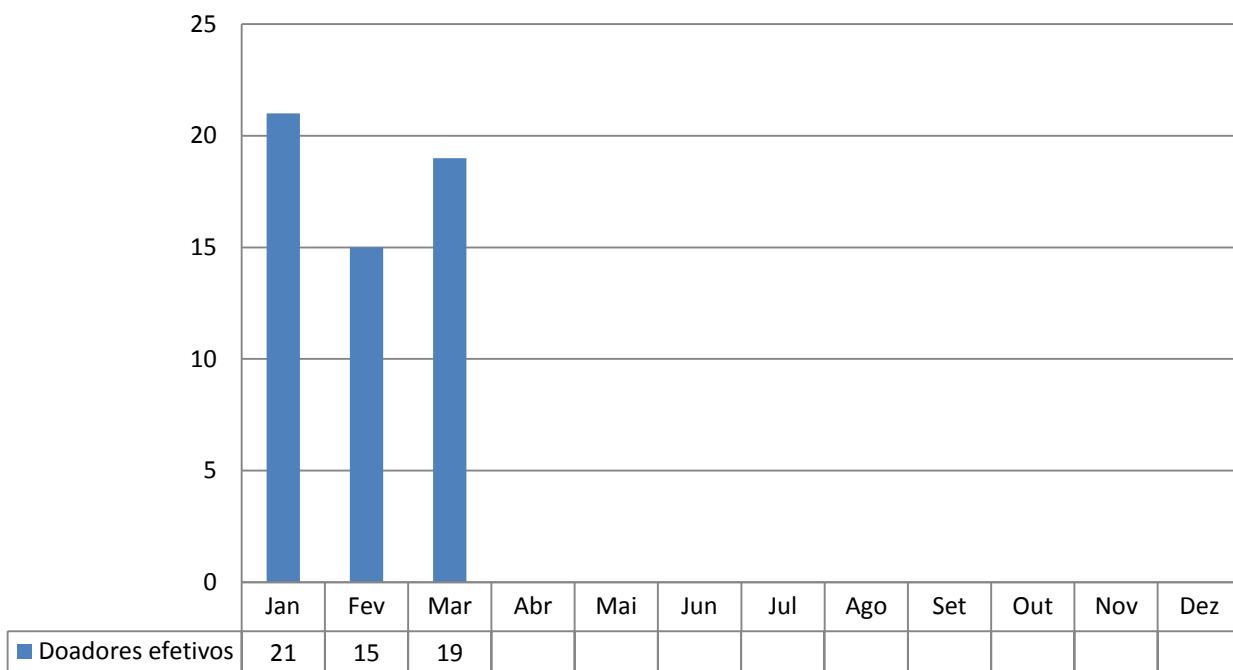
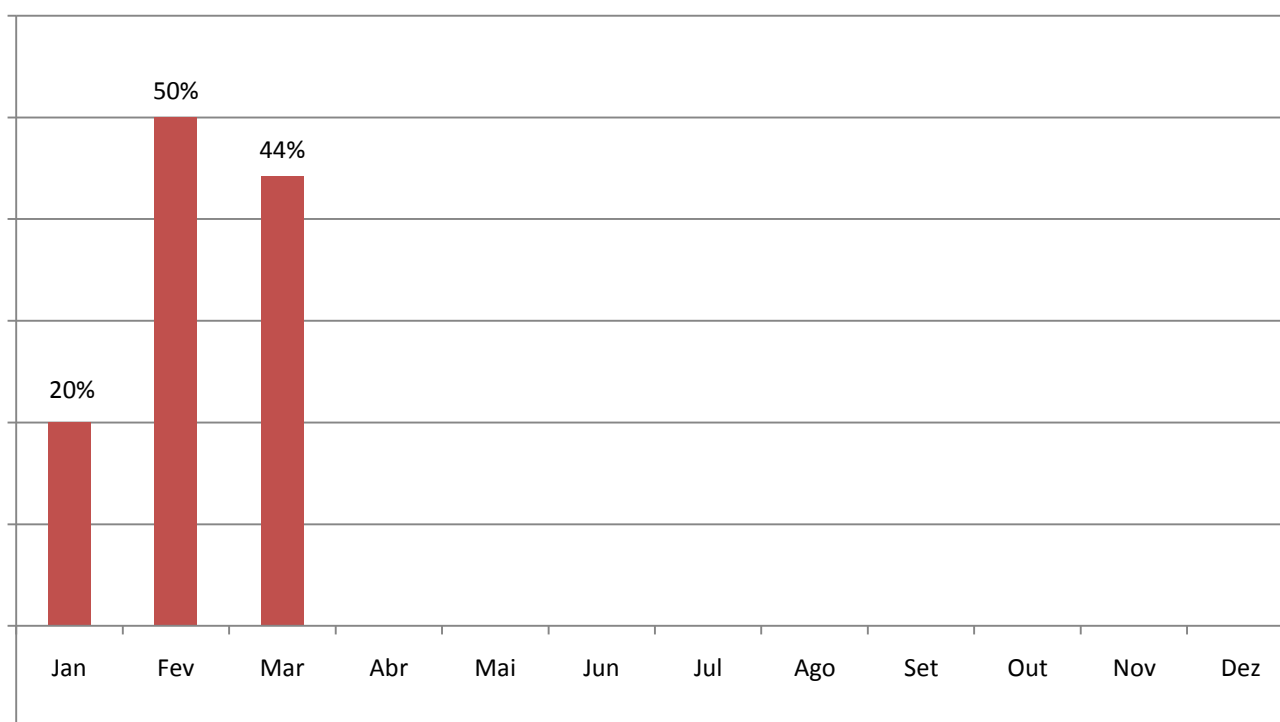


CENTRAL DE TRANSPLANTES DO RS EM 2018

Total de doadores no RS em 2019

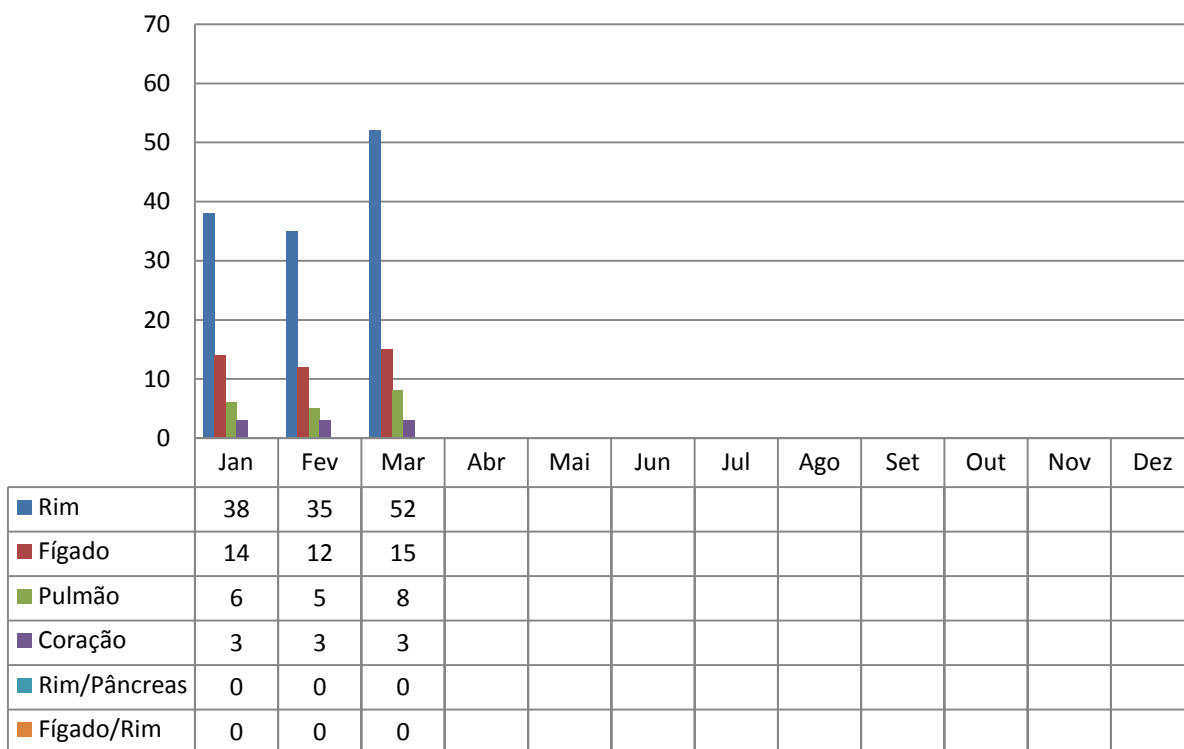


Percentual de Negativa Familiar no RS em 2019

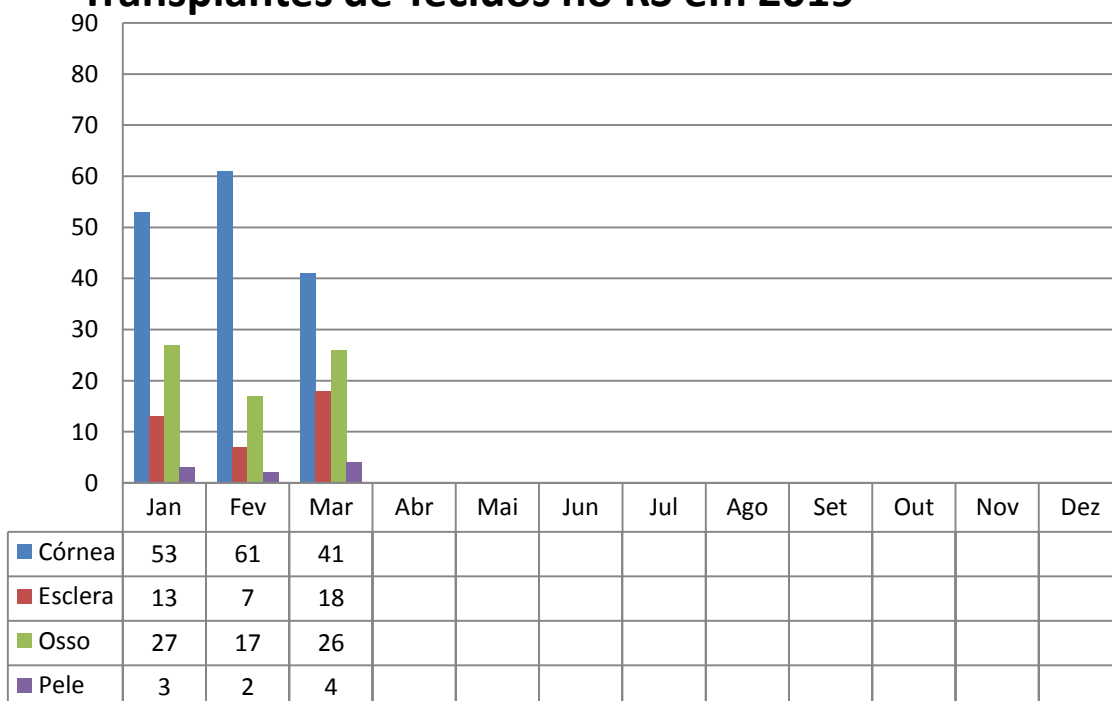


CENTRAL DE TRANSPLANTES DO RS EM 2018

Transplantes de Órgãos no RS em 2019

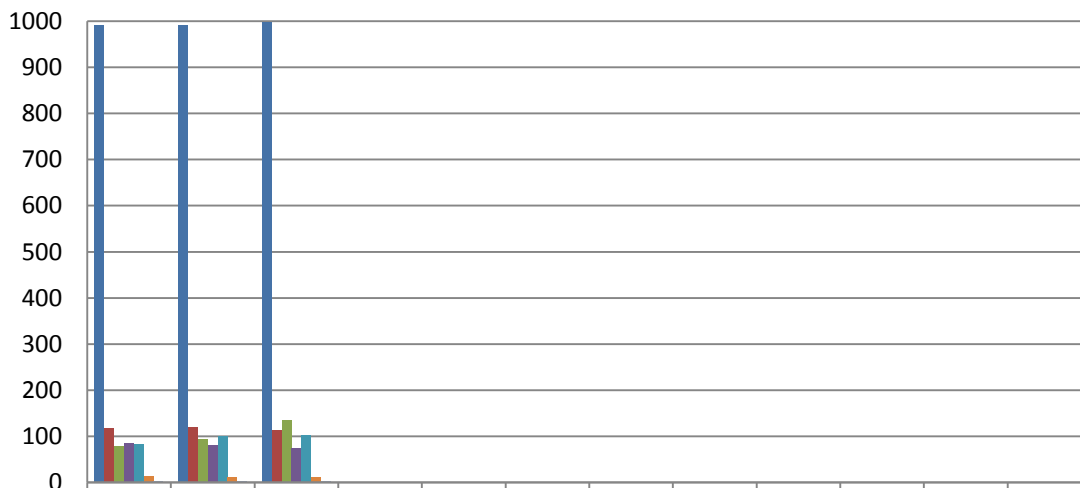


Transplantes de Tecidos no RS em 2019



CENTRAL DE TRANSPLANTES DO RS EM 2018

Lista de Espera no RS em 2019



	Jan	Fev	Mar	Abr	Mai	Jun	Jul	Ago	Set	Out	Nov	Dez
Rim	991	991	998									
Fígado	118	120	115									
Medula Óssea	79	95	135									
Pulmão	85	82	75									
Córnea	83	100	102									
Coração	15	13	13									
Rim/Pâncreas	4	3	3									