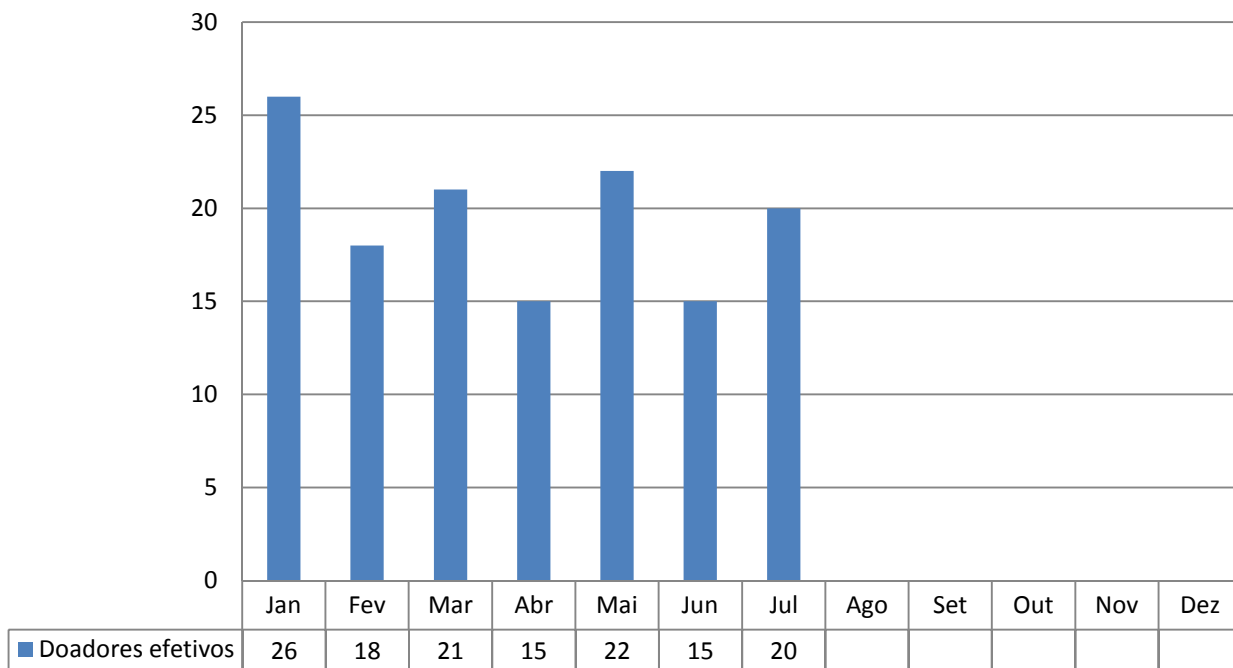
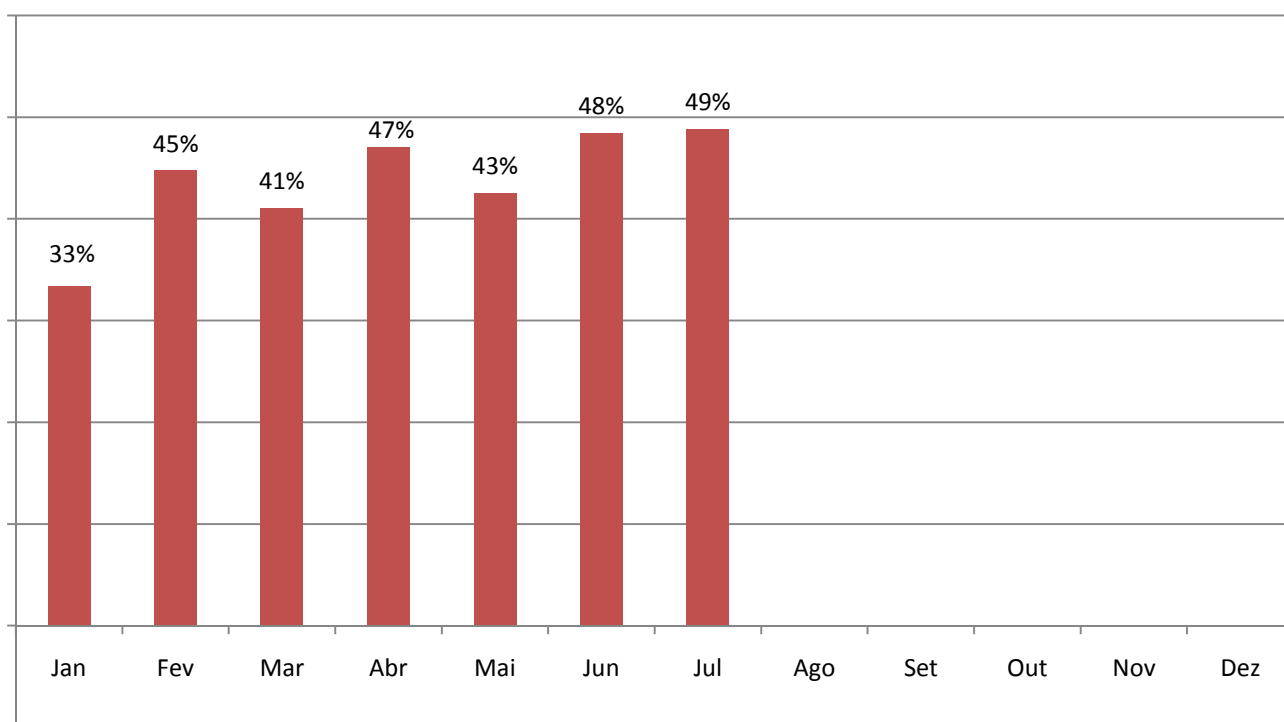


# CENTRAL DE TRANSPLANTES DO RS EM 2018

## Total de doadores no RS em 2018

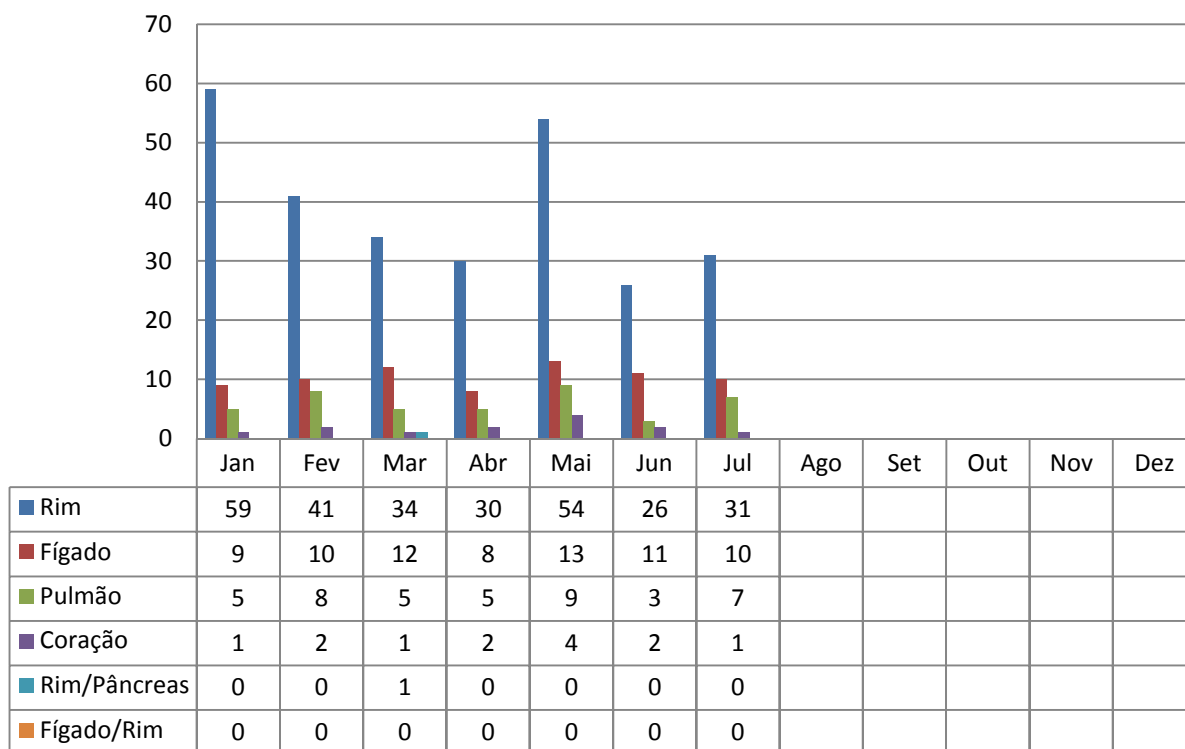


## Percentual de Negativa Familiar no RS em 2018

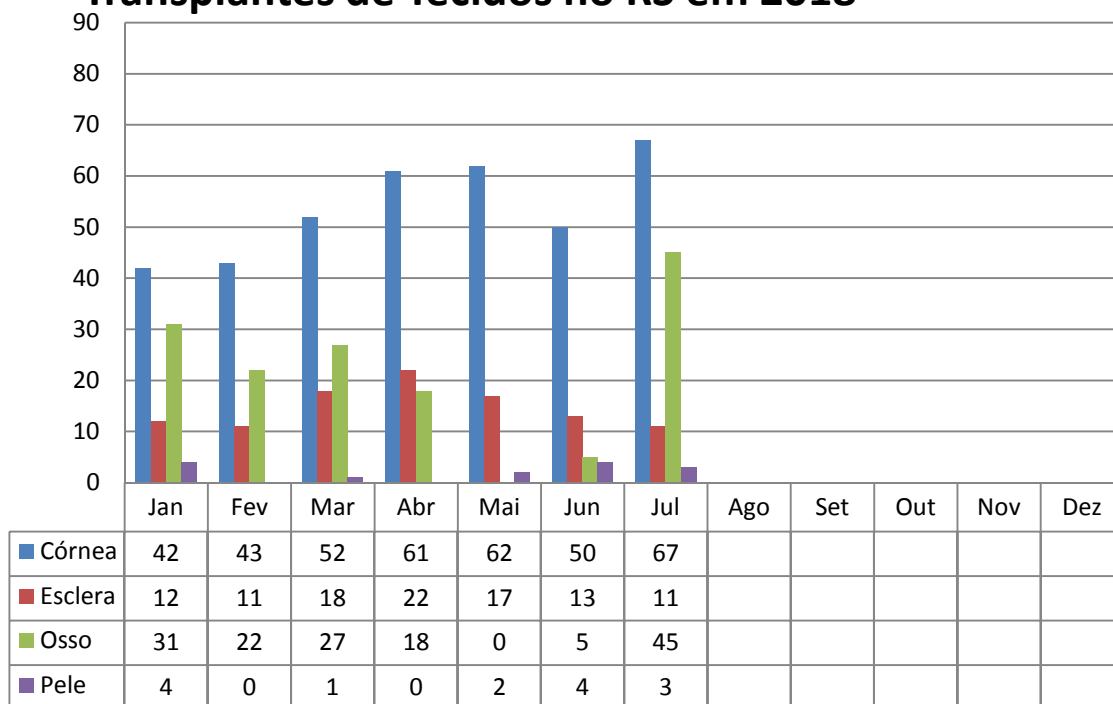


## CENTRAL DE TRANSPLANTES DO RS EM 2018

### Transplantes de Órgãos no RS em 2018

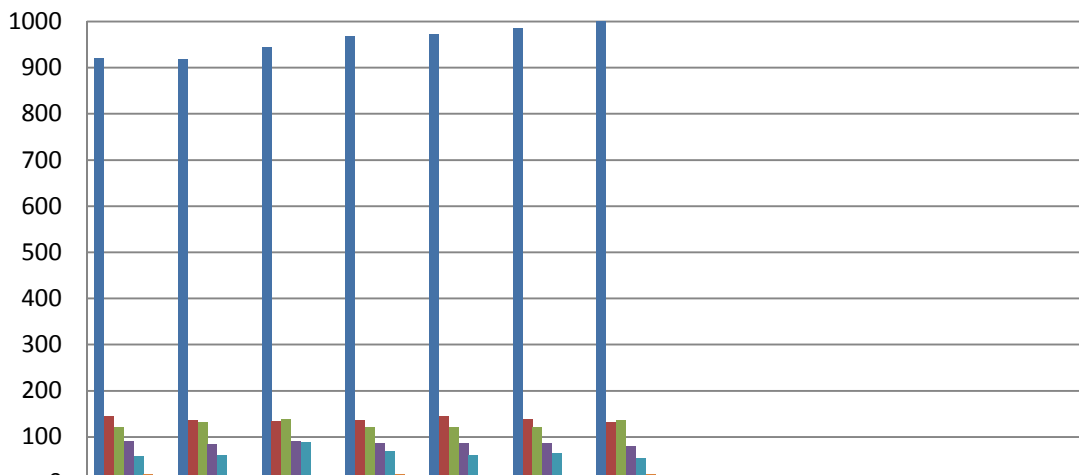


### Transplantes de Tecidos no RS em 2018



# CENTRAL DE TRANSPLANTES DO RS EM 2018

## Lista de Espera no RS em 2018



	Jan	Fev	Mar	Abr	Mai	Jun	Jul	Ago	Set	Out	Nov	Dez
Rim	920	919	943	968	972	986	1003					
Fígado	144	135	134	136	144	137	131					
Medula Óssea	121	131	137	120	120	121	136					
Pulmão	89	83	90	85	86	86	80					
Córnea	59	61	88	69	60	65	54					
Coração	18	16	17	19	16	17	18					
Rim/Pâncreas	11	11	9	8	8	8	7					